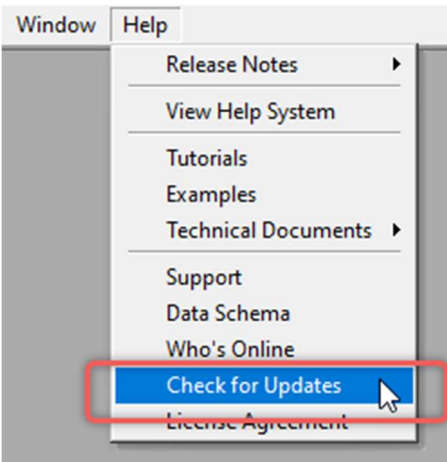




1. Downloading the StormWise GWIS Toolbox:

- The StormWise GWIS Toolbox are compatible with StormWise versions 4.08.xx only. Prior StormWise versions are not compatible with the current toolset.
- The download link the StormWise GWIS Toolbox can be accessed through the StormWise software. From StormWise, click “Help > Check for Updates” to both verify that StormWise is up-to-date and to download the installation files for the StormWise GWIS Toolbox.

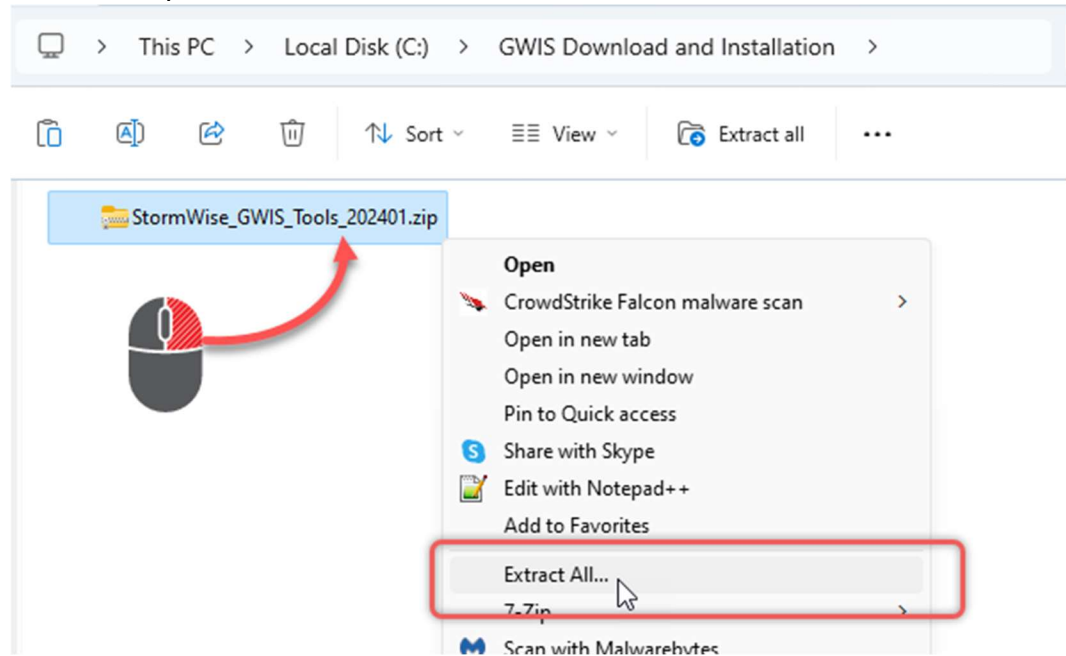


- Alternatively, click [this link](#) to open Streamline’s Downloads web page. This page provides various installation files associated with our products including the StormWise GWIS Toolbox.

Downloads	
<div> Streamline TECHNOLOGIES</div> <div> StormWise</div>	
Latest Version: 4.08.01	
Release Date: January 29, 2024	
Description	Download Link
Installation Setup Exe File	StormWise_4.08.01_setup.exe
Installation Setup Zip File	StormWise_4.08.01_setup.zip
Installation Guide	Installation_Guide.pdf
Release Notes v4.08.01	Release_Notes_v40801.pdf
Release Notes v4.08.00	Release_Notes_v40800.pdf
Examples & Tutorials	StormWise_Examples_v4.08.00.zip
Templates	StormWise_Templates_v4.08.00.zip
StormWise - GWIS v2.1 Data Exchange/Migration-Tools	StormWise_GWIS_Tools_202401.zip
Lesson 1 (Building Blocks & Hydrology) Recording	

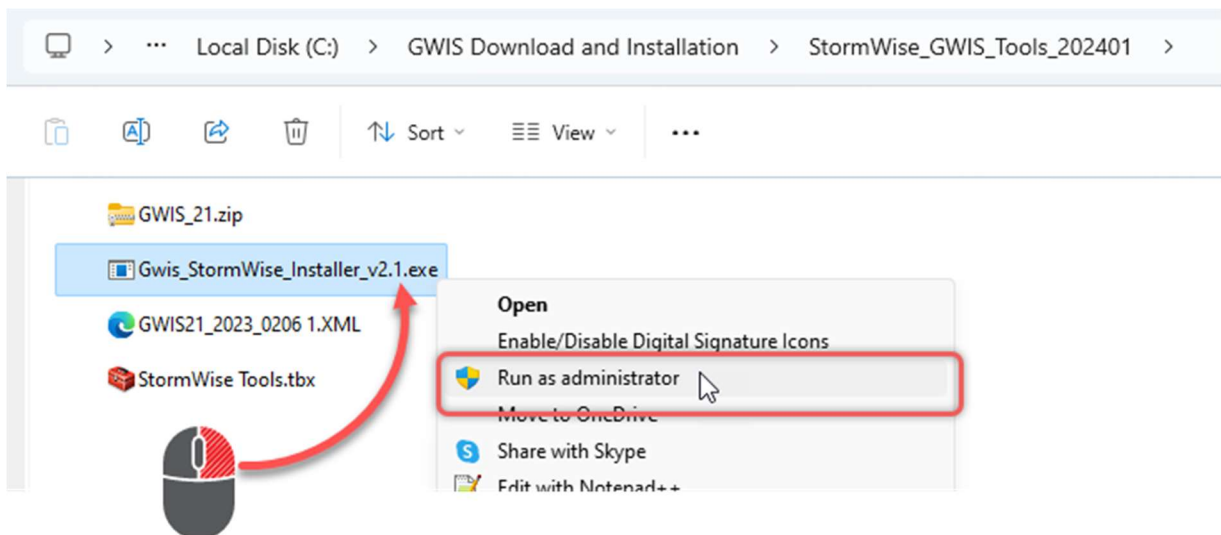
Installation Guide: StormWise GWIS Data Exchange/Migration Tool for ArcGIS Pro

- Once the StormWise GWIS Toolbox is downloaded, place the file in a folder on the computer's local drive and unzip the folder.



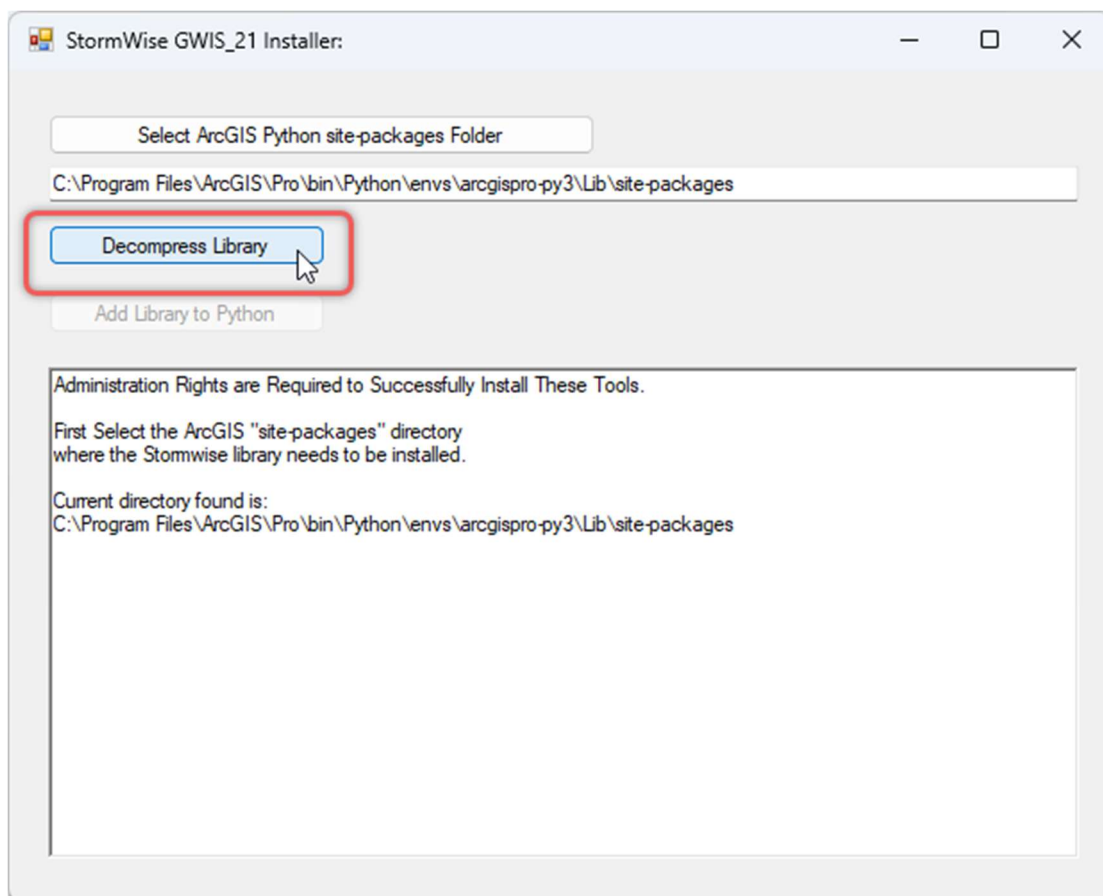
2. StormWise GWIS Modules Installation for ArcGIS Pro:

- The automated GWIS_21 installation is provided in the "StormWise_GWIS_Tools_202401" folder from the download link. It contains the installation file, geodatabase schema file, and StormWise GWIS toolbox.
- Right click the Gwis_StormWise_Installer_v2.1.exe file located in the "StormWise_GWIS_Tools_202401" folder and 'Run as Administrator'.

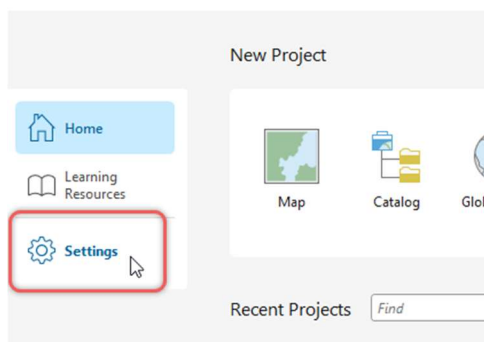


Installation Guide: StormWise GWIS Data Exchange/Migration Tool for ArcGIS Pro

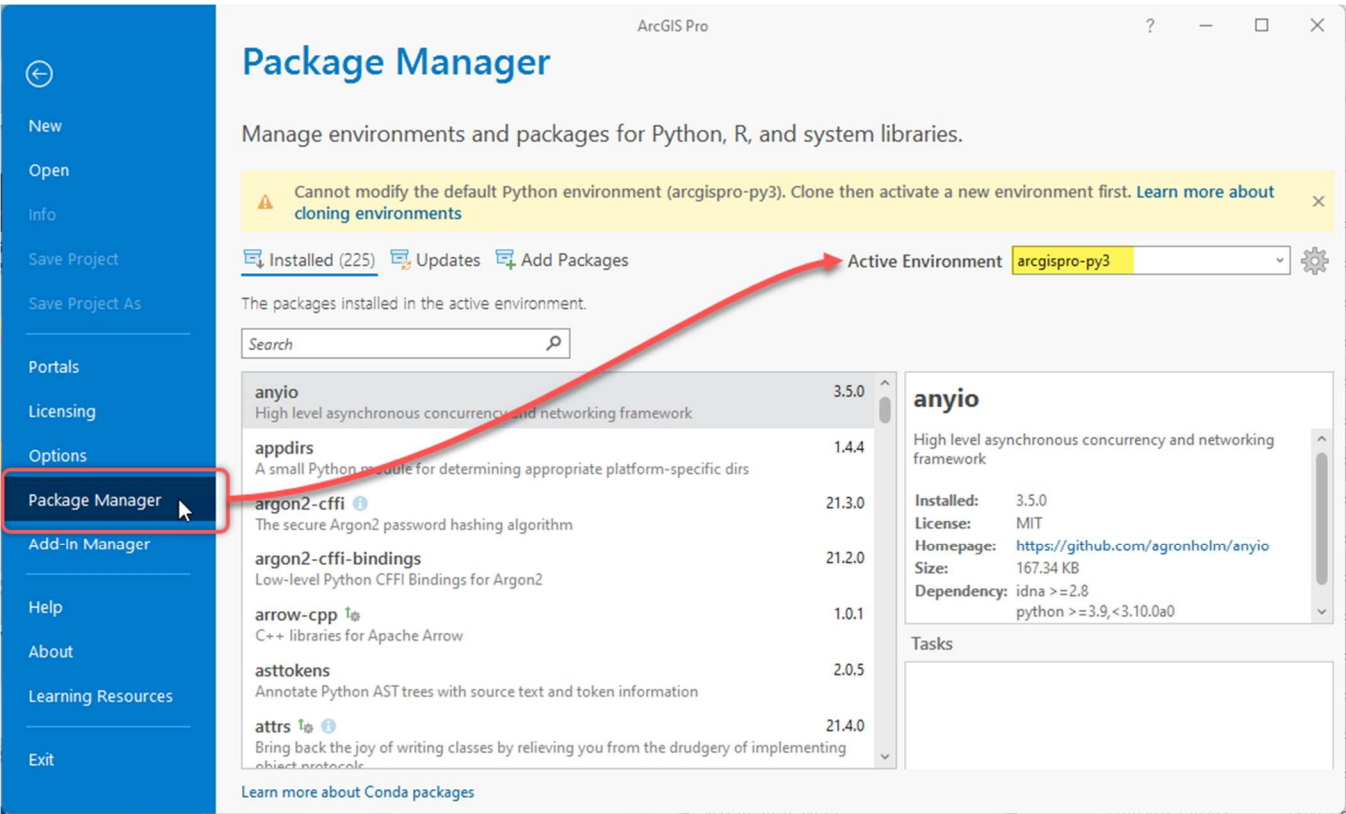
- Now, click the "Decompress Library" button.



- Verify the Python environment/site-packages folder where the modules will be added to your ArcGIS installation.
 - **ArcGIS Pro Python Environment:** The ArcGIS Pro Python environment is typically located in the "C:\Program Files\ArcGIS\Pro\bin\Python\envs\arcgispro-py3\Lib\site-packages" folder. This is the Python environment that is created when ArcGIS Pro is installed. However, it is possible to clone the Python environment. Consequently, multiple Python environments are possible in ArcGIS Pro. As a result, you should verify which Python environment is utilized for your ArcGIS Pro projects before installing the GWIS modules.

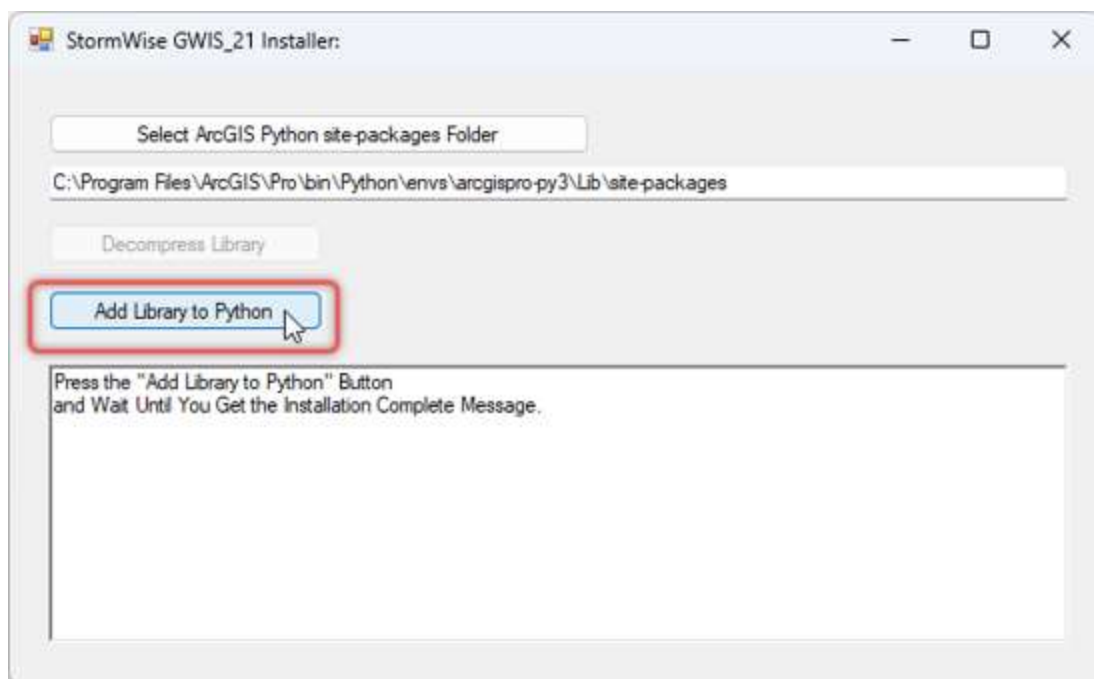


Installation Guide: StormWise GWIS Data Exchange/Migration Tool for ArcGIS Pro

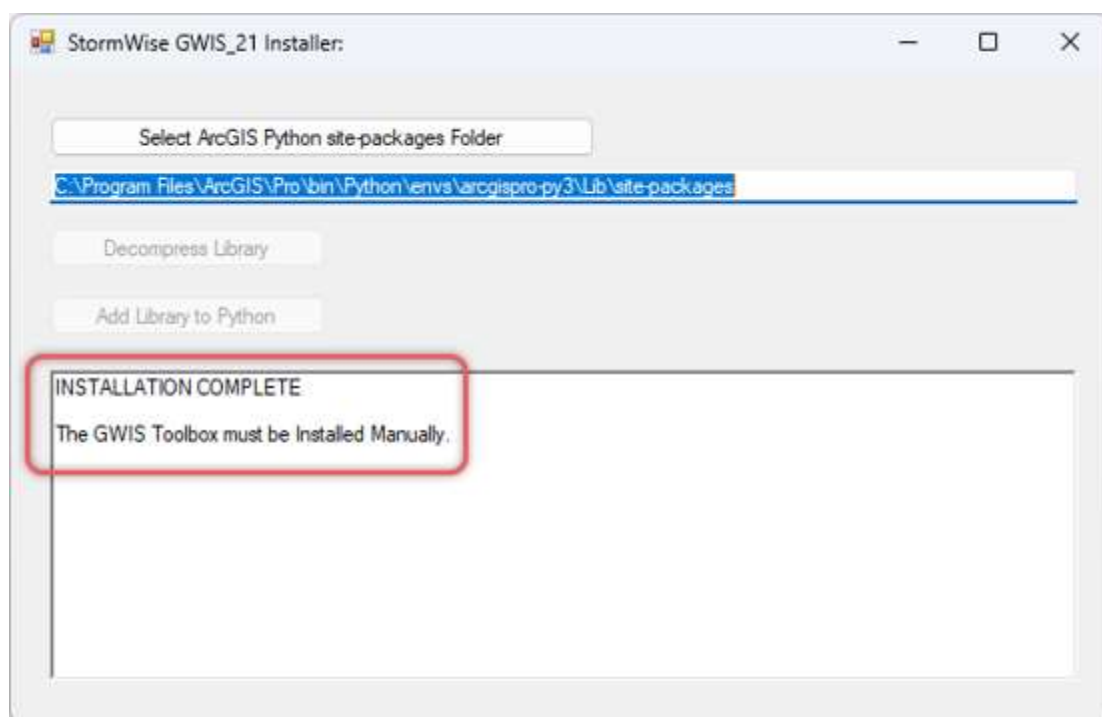


Installation Guide: StormWise GWIS Data Exchange/Migration Tool for ArcGIS Pro

- Next, click “Add Library to Python”.



- When GWIS_21 is successfully added to the Python environment, you will receive the “Installation Complete” message shown below. This process adds GWIS_21 to the specified Python environment only. To install GWIS_21 to additional Python environments, this entire process must be repeated by selecting the Python environment for each installation.

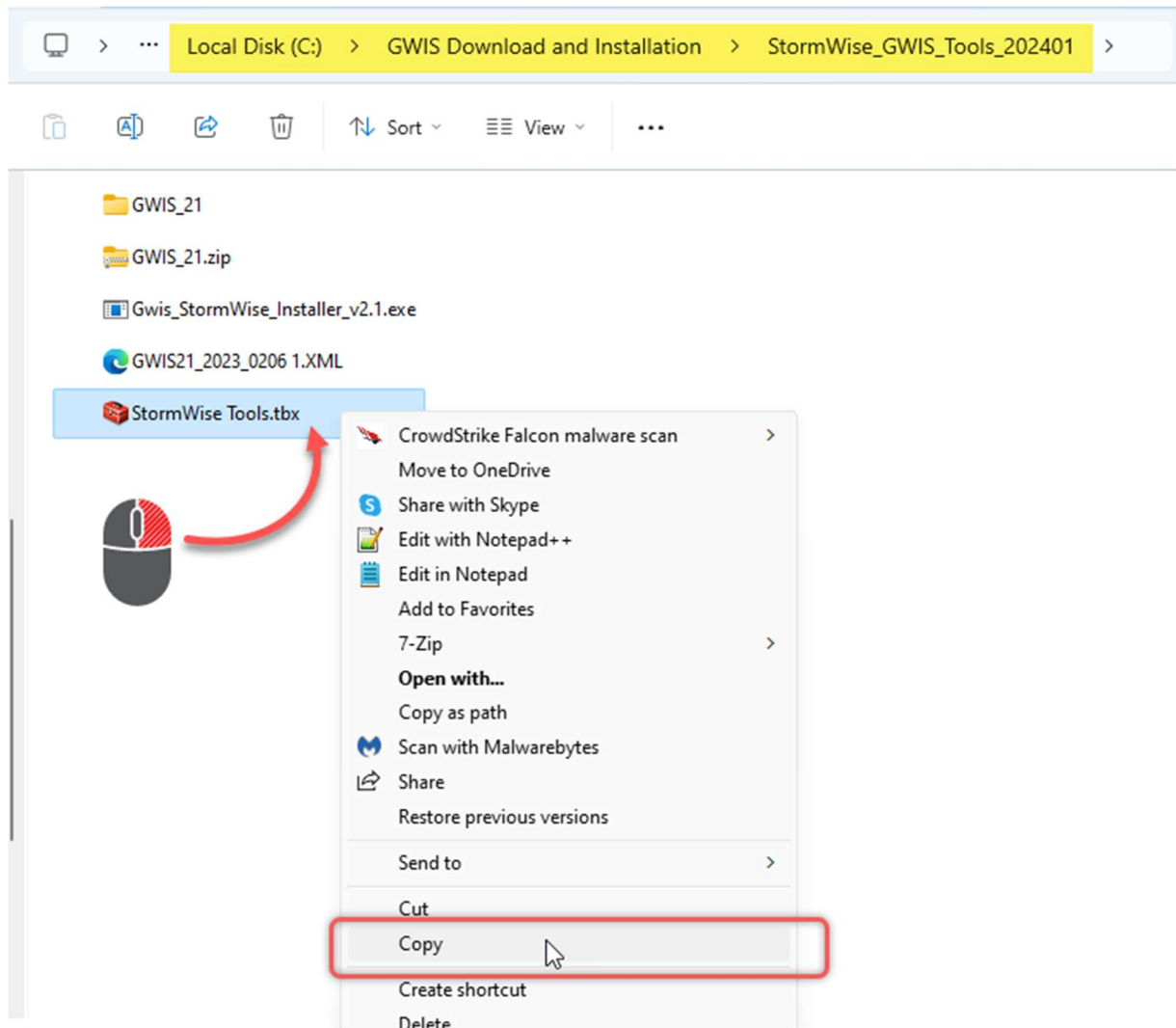


3. Adding StormWise GWIS Toolbox to ArcGIS Pro Project

The StormWise GWIS toolbox where the tools are accessed must be added manually to ArcGIS Pro. Two methods to add the toolbox to ArcGIS Pro are discussed below.

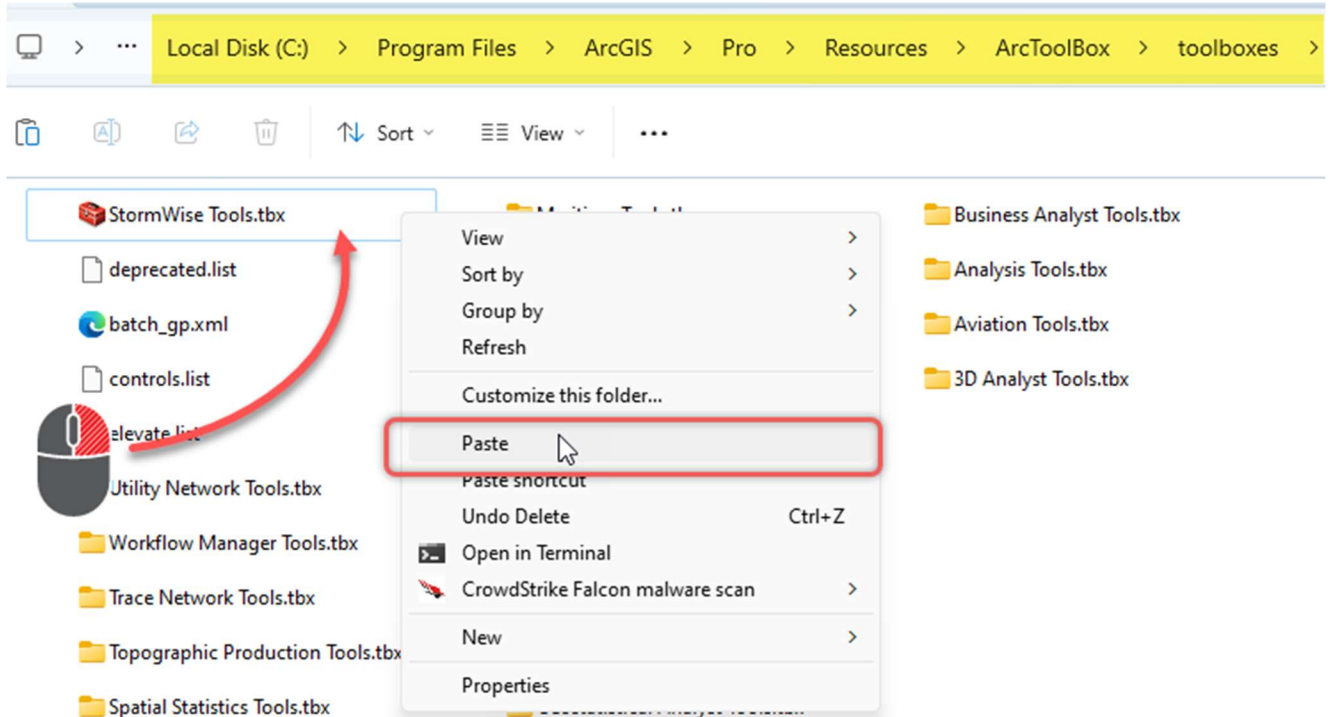
[ArcGIS Pro Option 1 \(Recommended\): StormWise GWIS Toolbox Installation to Application](#)

- Go to the StormWise_GWIS_Tools_202401 folder you extracted in the previous step and copy the "StormWise Tools.tbx"

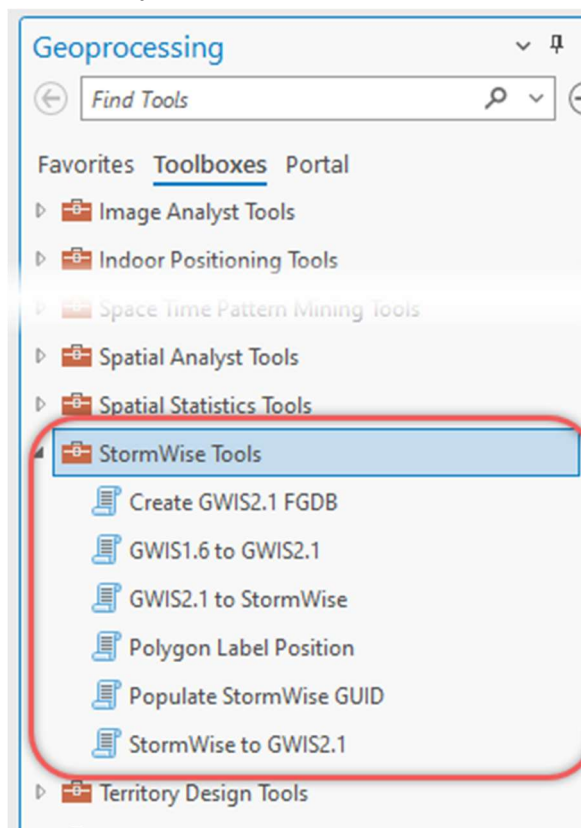


Installation Guide: StormWise GWIS Data Exchange/Migration Tool for ArcGIS Pro

- Navigate to “C:\Program Files\ArcGIS\Pro\Resources\ArcToolBox\toolboxes” folder on your computer and paste the copied toolbox “StormWise_Tools.tbx” in the folder to add the StormWise GWIS toolbox to ArcGIS Pro.

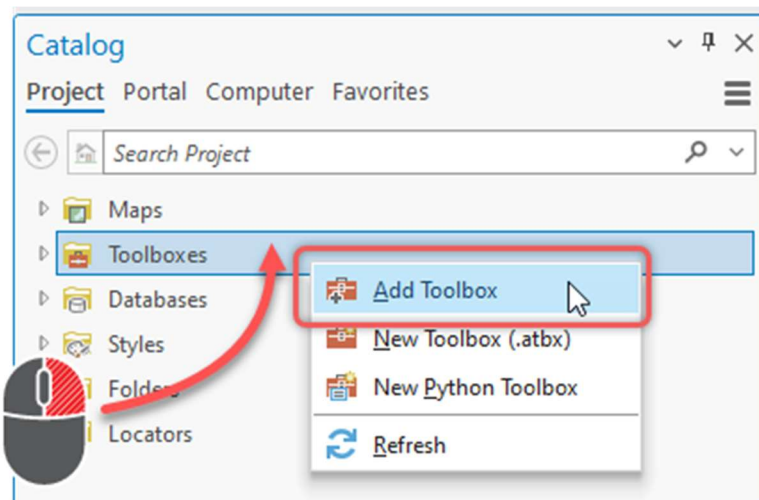


- The toolbox will be available under the Geoprocessing toolbox list. To access the toolbox, it may be necessary to restart ArcGIS Pro.

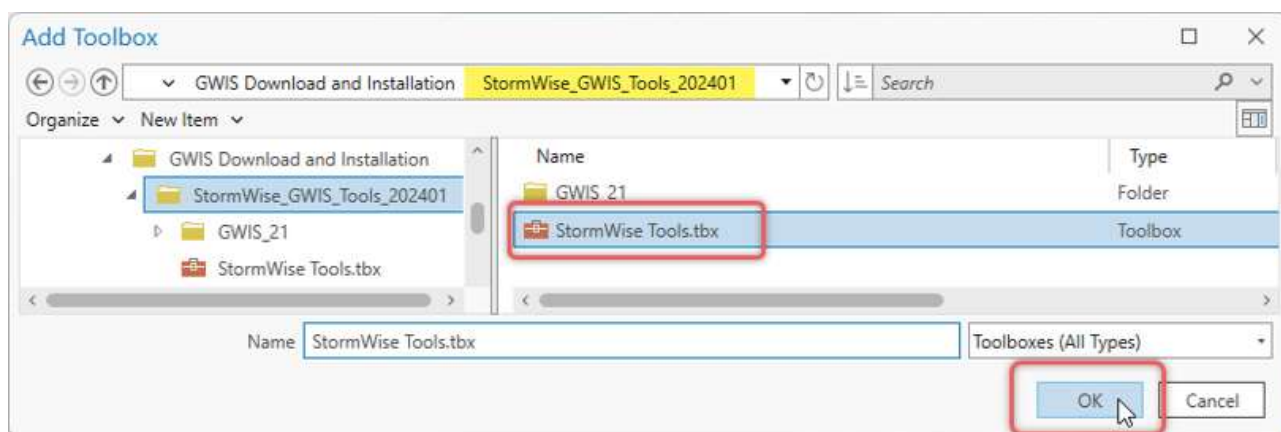


ArcGIS Pro Option 2: StormWise GWIS Toolbox Installation to Project

- Either create a new or open an existing ArcPro project. Then, go to the “Catalog”. Right click on “Toolboxes” and select “Add Toolbox”.

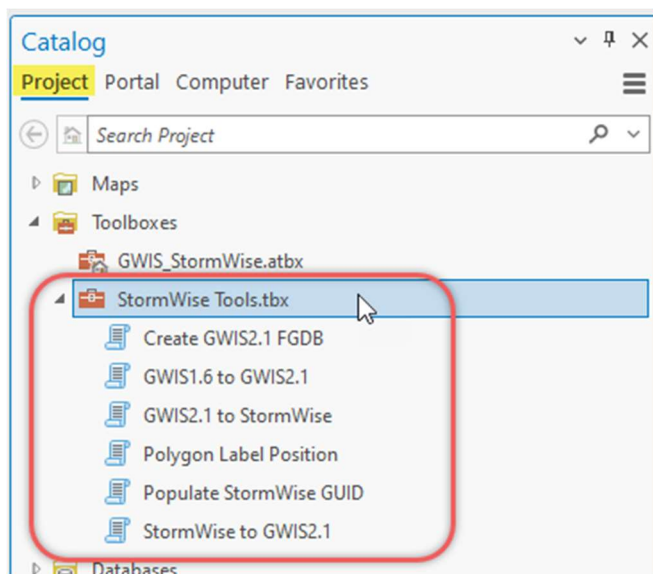


- Navigate to the “StormWise_GWIS_Tools_202401” folder and select “StormWise Tools.tbx”. Click OK.



Installation Guide: StormWise GWIS Data Exchange/Migration Tool for ArcGIS Pro

- The StormWise GWIS toolbox will be added to the “Catalog > Project” tab of the ArcGIS Pro project. Click on “StormWise Tools” to expand and view the tools included in the toolbox. Be sure to save the project so the toolbox is available the next time the project is opened.



Please refer to the ‘Help > View Help System’ of ‘StormWise’ software to learn more about using these toolsets within the StormWise GWIS toolbox.

